

MEGATUGS

Salvage & Towage

2, Iron Polytechniou
Street,
188 63 Neo Ikonio,
Greece
T: +30 210 4522131
F: +30 210 4180176
W: www.megatugs.gr

PANTANASSA



PARTICULARS

Vessel Type	Anchor Handling, Salvage Tug
IMO Number	9332561
Port of Registry	Piraeus
Year Built	2005
Classification notations	Bureau Veritas Hull Mach, Tug, Oil Recovery Ship, FIFI I – Water Spray, Unrestricted navigation

DETAILS

Length Overall	40 m
Breadth	11.8 m
GRT-NRT	499/149
Depth Moulded	4.6 m
Maximum draft	3.8 m
Clear deck Space	150 m ²
Deck loading	5 t/m ²
Max Speed	13 kn / 7 m ³
Economical speed	10 kn / 4.2 m ³
Bollard Pull	60.4 t
Sewage Plant	MARPOL compliant 20 persons
Rudders	Twin
Joystick	Not fitted

CAPACITY

Fuel Oil	368.18 m ³
Fresh Water	172.3 m ³
Foam	7.8 m ³
Detergent	9.3 m ³

MACHINERY

Main Engines	2 x Caterpillar 3516B – 2026 BHP each
Generators	2 x Caterpillar 3306C – 311 BHP - 232 kW each
Port Generator	1 x CAT DE110E2 110kVA
Bow Thruster	1 x HRP 3001 TT / 220kW
Propulsion	2 x Fixed pitch



2, Iroon Polytechniou
Street,
188 63 Neo Ikonio,
Greece
T: +30 210 4522131
F: +30 210 4180176
W: www.megatugs.gr

ACCOMMODATION

Berths 3x 1, 1x 2, 3x 4
Total 17

FIRE FIGHTING

Class FIFI I
Monitors 2 x 1200m³/hr
Pumps 1 x 2900m³/hr

DECK EQUIPMENT

Towing Winch

Type Double drum waterfall
Pull 50 t
Wire Capacity 1000 m x 42 mm

Anchor Handling Winch

Type Plimsoll double drum waterfall
Pull 50 t
Brake Holding 120 t
Wire Capacity 1000 m x 42 mm

Tugger Winch

Number & Capacity 2 x 5 t SWL
Wire Capacity 100 m x 26 mm

Other Deck Equipment

Towing Pins Plimsoll 100 t
Stern Roller Plimsoll 1.45 m x 3.5 m, 150 t SWL
Shark Jaws 100 t Strong Jaw, 78 mm
Deck crane Palfinger, PK 15500 C, 910 KG @ 12,40 m

LIFESAVING

Liferafts 2 x 20 man
Lifejackets 39
FRC/Rescue Boat/Davit SOLAS Semi-rigid BMD Rescue boat & KATO KS 454 RC Davit
Lifebuoys 8

SPECIALIST

Rescue Zone Fitted

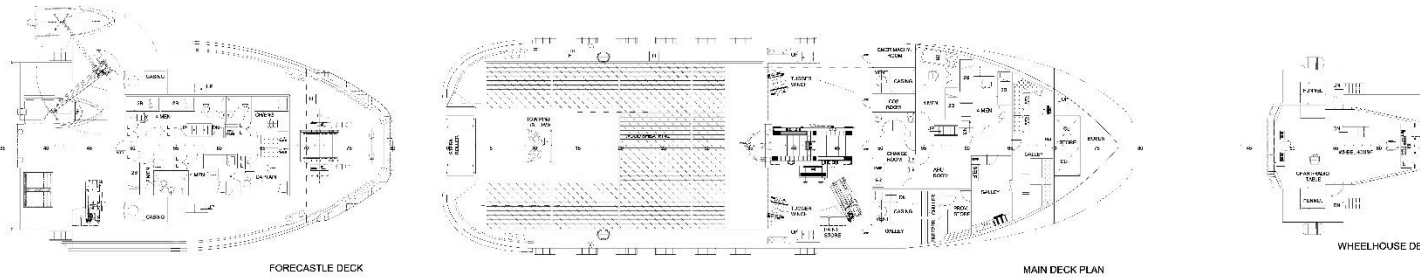
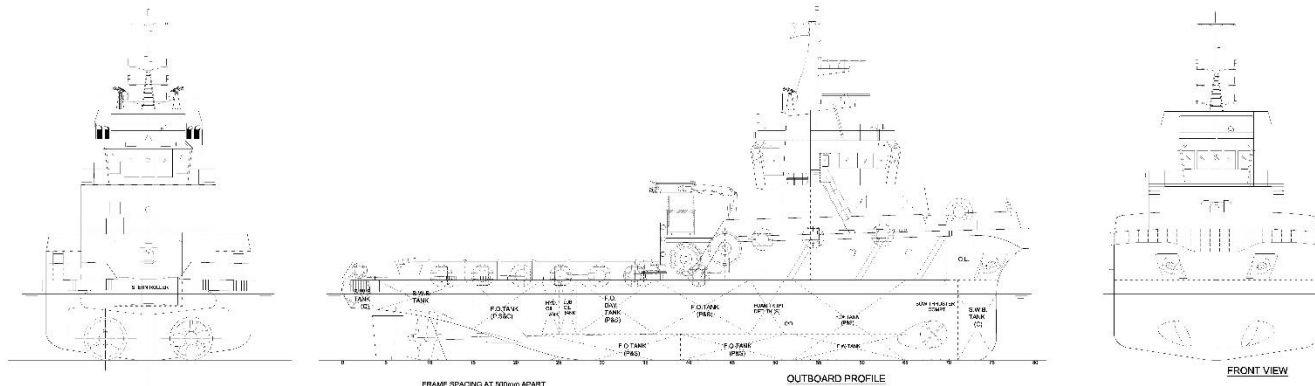
SALVAGE/ ANTIPOLLUTION

Oil Spill Response booms Yes
Salvage pumps Yes

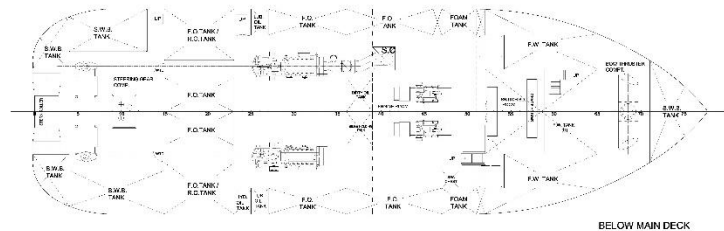
VIDEO PRESENTATION

<https://www.youtube.com/watch?v=fxhwqyR2aKQ>

GENERAL ARRANGEMENT



MAIN DIMENSIONS:
 LENGTH over all 40,00m
 LENGTH between P.P. 34,90m
 BREADTH moulded 11,80m
 DEPTH moulded 4,60m
 DESIGN DRAFT 3,80m
 TOTAL POWER 4000 BHP
 TRIAL SPEED 12,00 Knots
 BOLLARD PULL 50,00 Tons



Description:	Revision:	Date:	Resp:	Clk:
MV PANTANASSA				
GENERAL ARRANGEMENT				
	Scale: 1:100 Date: 05/06/16 Rev: 3	Class: BV No.: Approved:	Dwg: MTUG01-02 No.: Checked:	Drawn: